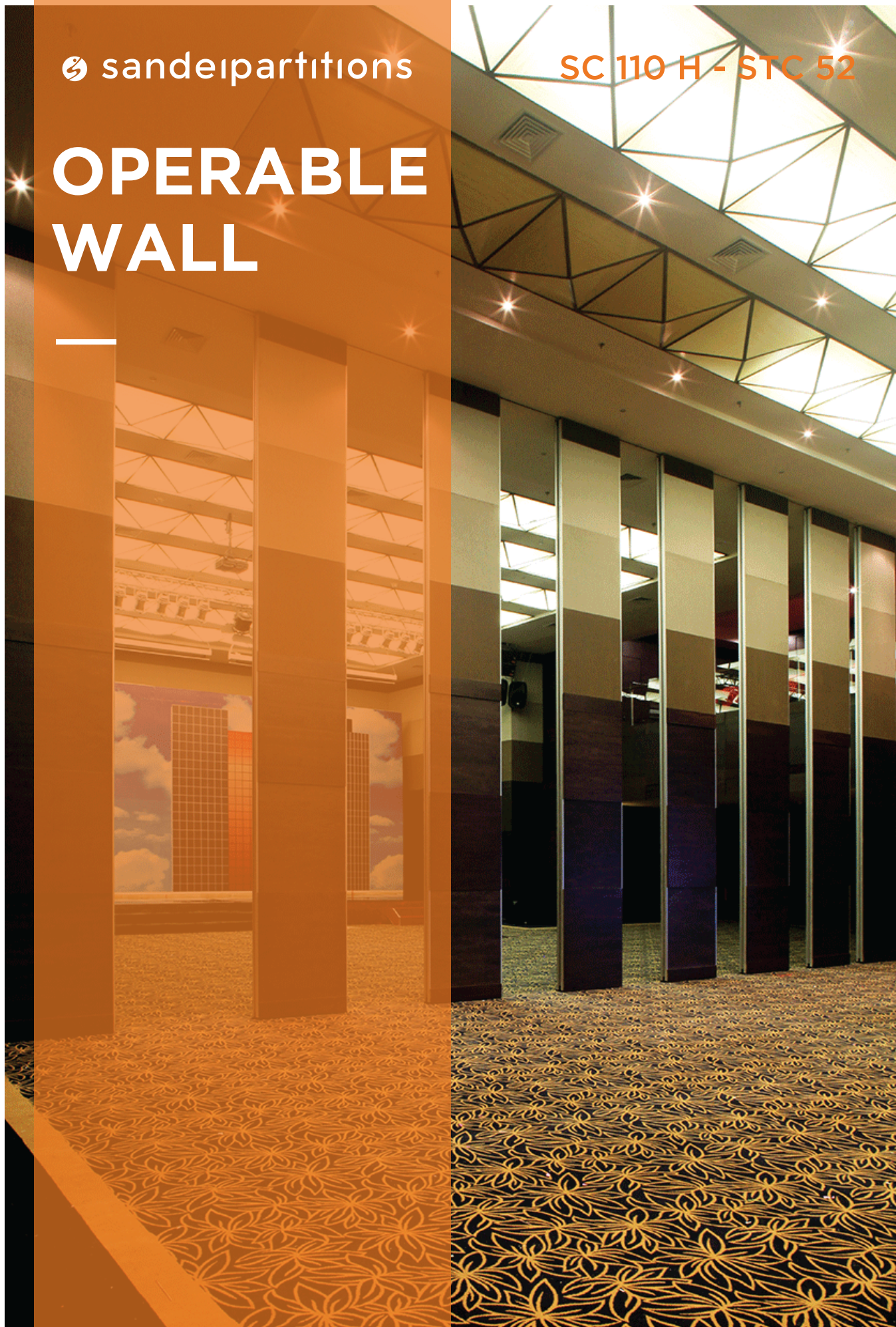
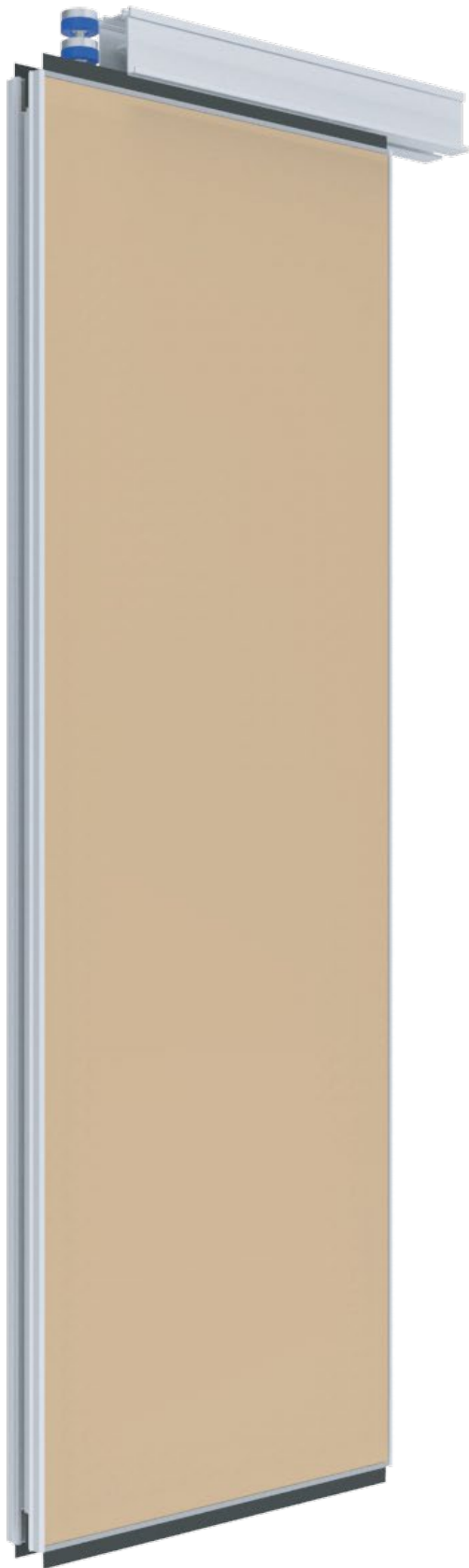


 sandeirpartitions

OPERABLE WALL

SC 110 H - STC 52





PANEL TYPE

SC 110 H - STC 52

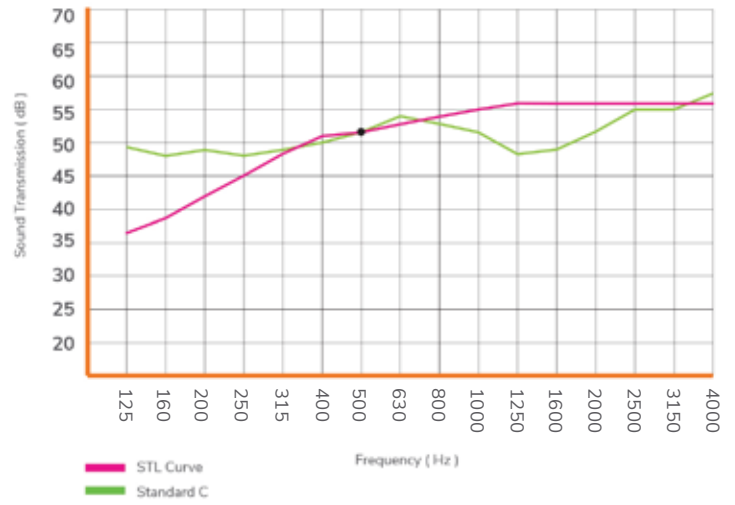
Durable, with maximum height up to 12 meters. SC 110 H offers the best sound reduction of all series. Suitable for large space such as banquet halls, ballrooms, halls, and conference rooms.

Kekuatan, serta ketinggian hingga 12 meter dengan pengurangan suara terbaik sangat cocok untuk tempat yang besar seperti banquet halls, dan ballroom.

PANEL TYPE SC 110 H - STC 52

Operation Methods	Maximum Size	
	Width	Height
Cross Type		
Ordinary	1200 mm	7500 mm
Parallel		
Induction		
Center Stacking 2 Runner		
R Type		
Parallel	1200 mm	12000 mm
Center Stacking 1 Runner	900 mm	3000 mm

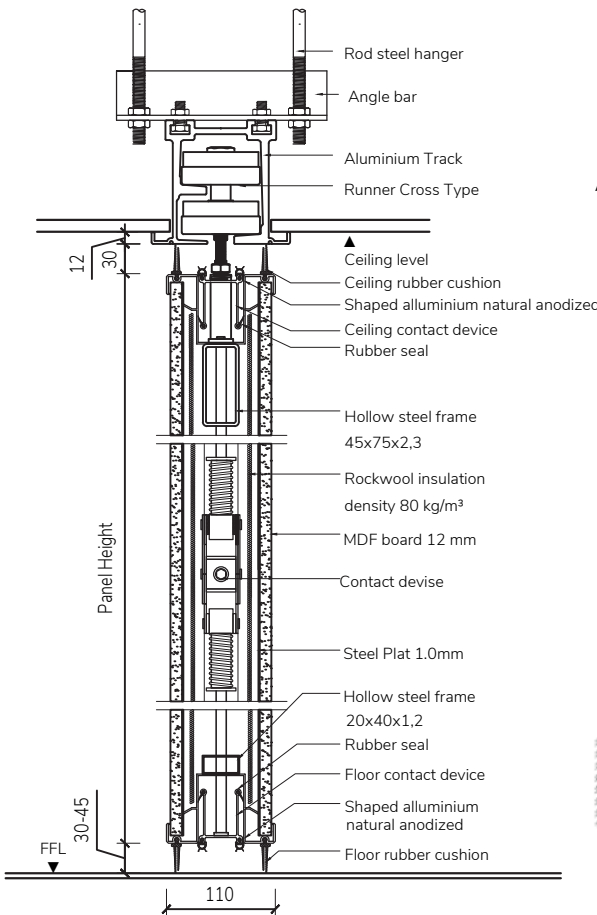
SOUND TRANSMISSION LOSS & STC RATING



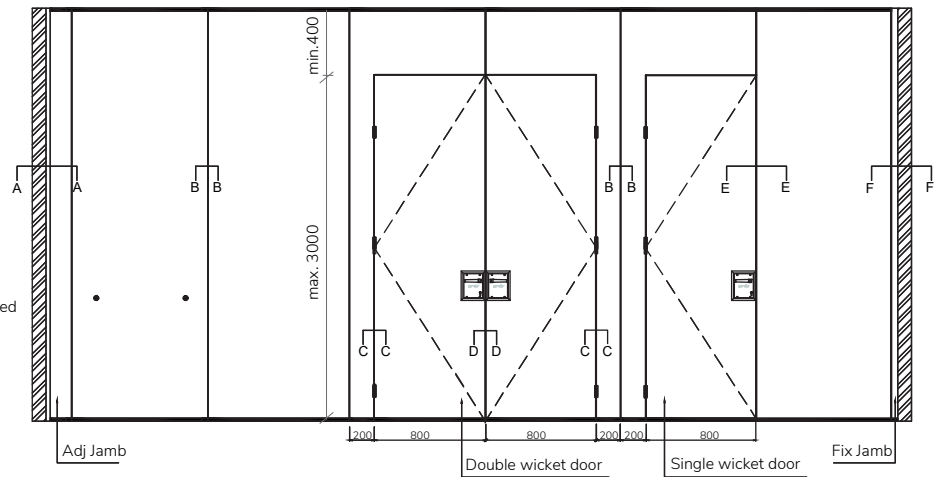
Weight Approximately : 48 kg/m²

SECTION DRAWING SC 110 H - STC 52

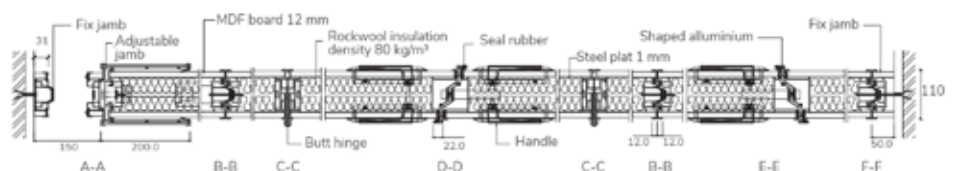
VERTICAL SECTION DRAWING



ELEVATION DRAWING



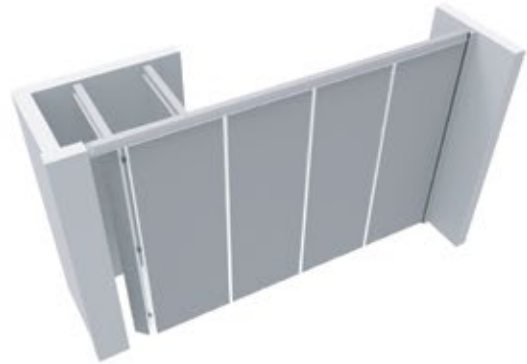
HORIZONTAL SECTION DRAWING



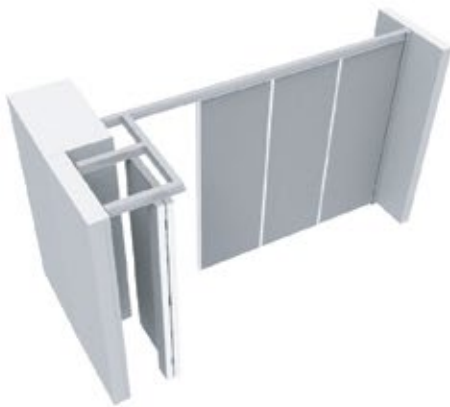
CROSS TYPE



Ordinary Stacking



Parallel Stacking

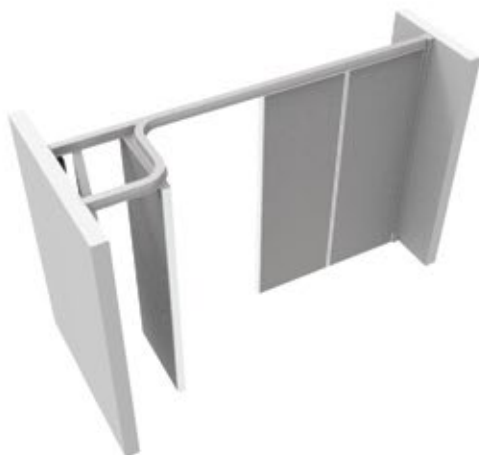


Induction Stacking

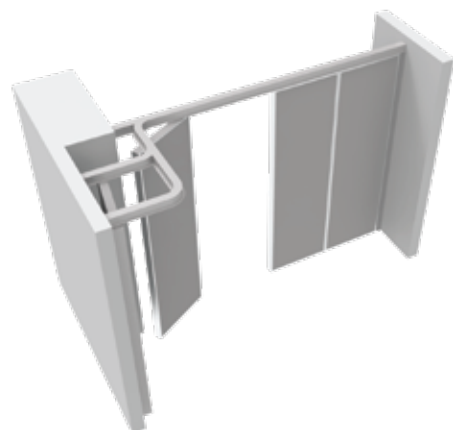


Center Stacking with 2 Runner

R-TYPE







Ordinary Stacking





Induction Stacking


CROSS TYPE

RHF - 300 kg	<p>Rails Aluminium anodized H-base 3-5 thk</p> <p>Runner Base : MC Blue Bearing : $\phi 40$ - 2pcs H. Density PTSE - bearing cover : $\phi 65$ - 2pcs Hanger bolt : Steel $\phi 14$</p>		
--------------	--	---	---

RHF - 400 kg	<p>Rails Aluminium anodized H-base 7-8 thk</p> <p>Runner Base : MC Blue Bearing : $\phi 47$ - 2pcs $\phi 52$ - 2pcs H. Density PTSE - bearing cover : $\phi 78$ - 2pcs Hanger bolt : Steel $\phi 16$</p>		
--------------	--	--	--

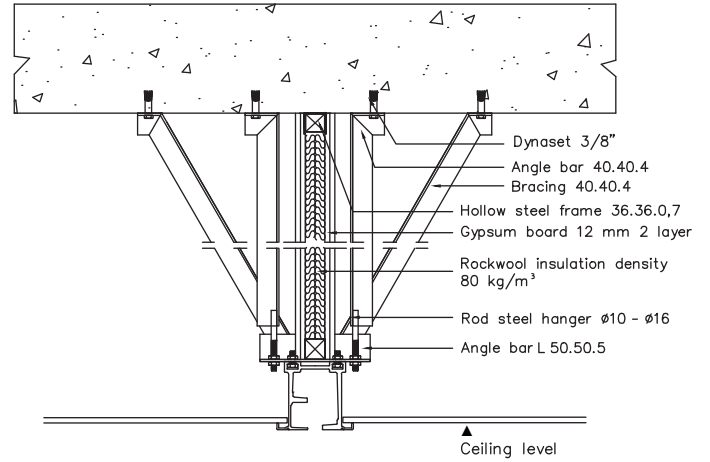
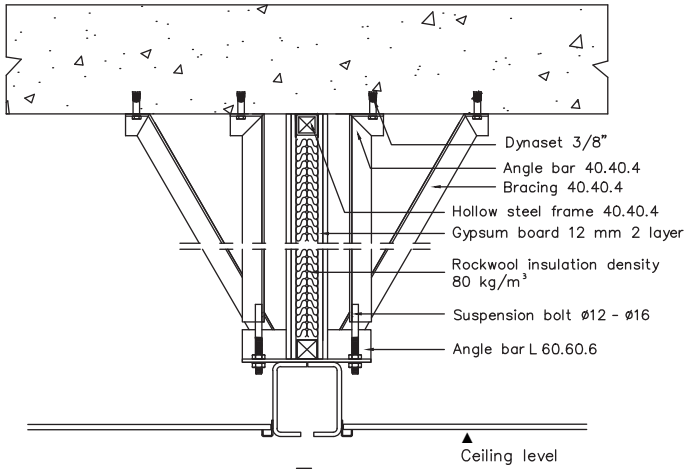
R-TYPE

R-300 kg	<p>Rails Aluminium anodized H-base 6 thk</p> <p>Runner Base : Aluminium Bearing : $\phi 26$ - 4pcs $\phi 30$ - 4pcs Hanger bolt : Base Ring Steel $\phi 14$</p>		
----------	--	---	---

R-800 kg	<p>Rails Steel (ST 45 8thk)</p> <p>Runner Base : Steel Bearing : $\phi 35$ - 4pcs $\phi 52$ - 4pcs Hanger bolt : Base Ring Steel $\phi 16$</p>		
----------	---	---	---

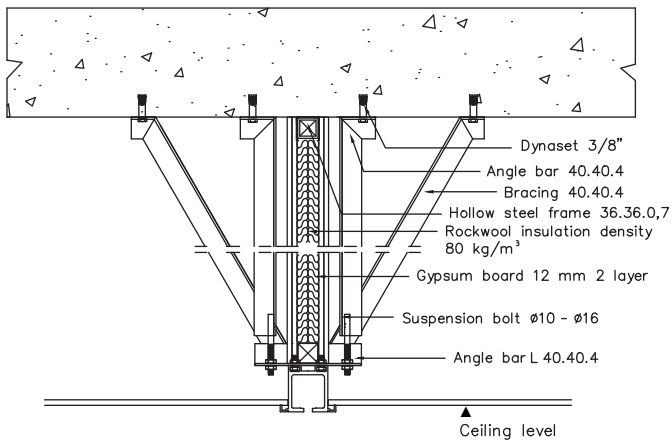
SOUND INSULATING ABOVE CEILING

DOUBLE LAYER GYPSUM

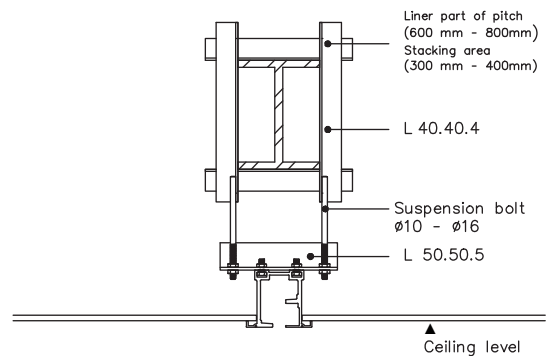


CONSTRUCTION SUPPORT

CONCRETE



NON CONCRETE



EXTRA FEATURE



Door Handle

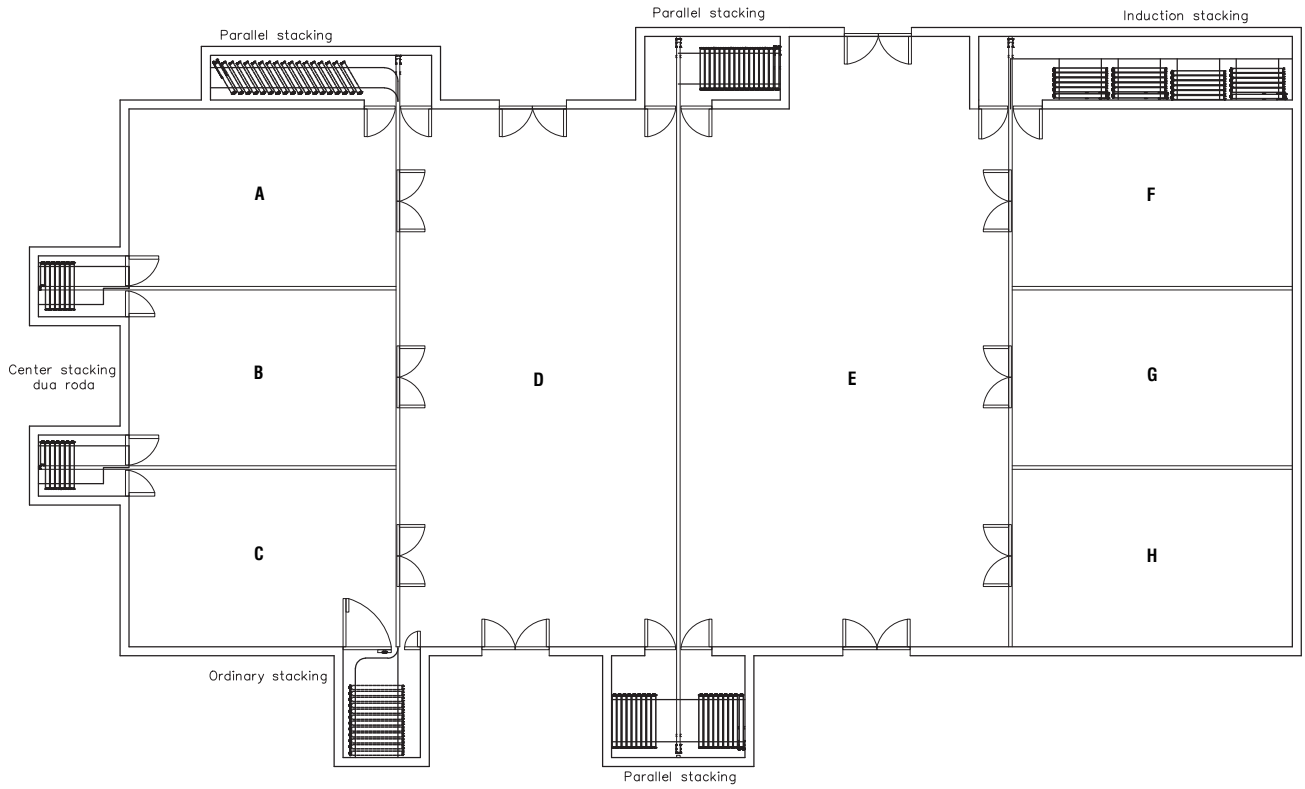


Crank Handle

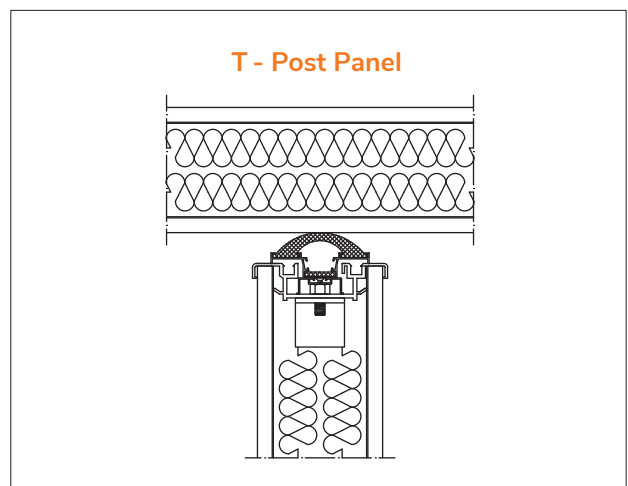
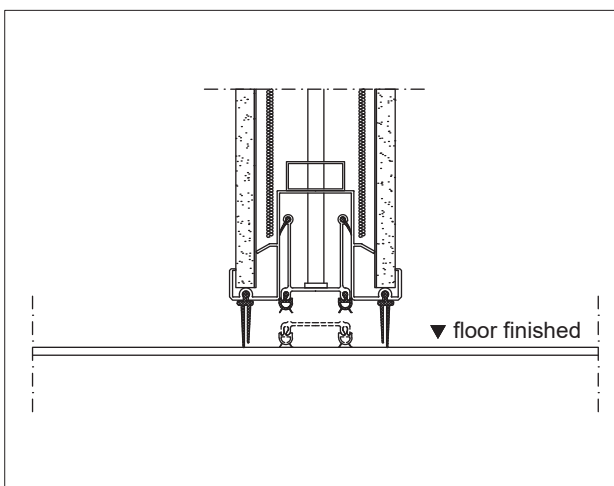
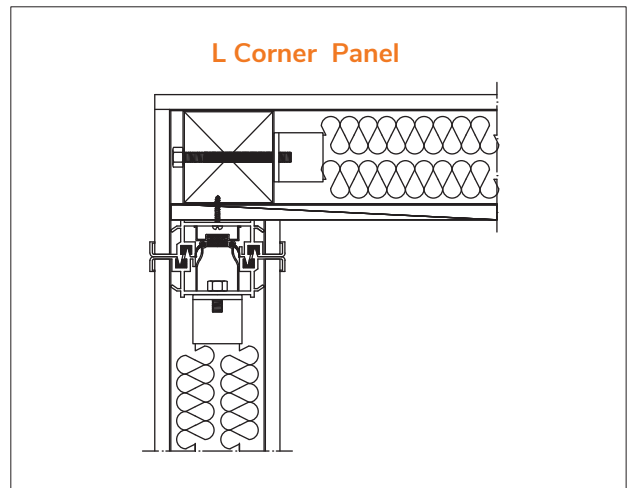
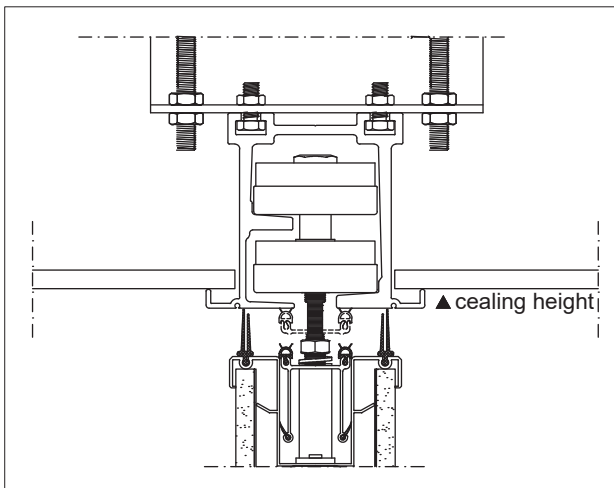


Crank Handle

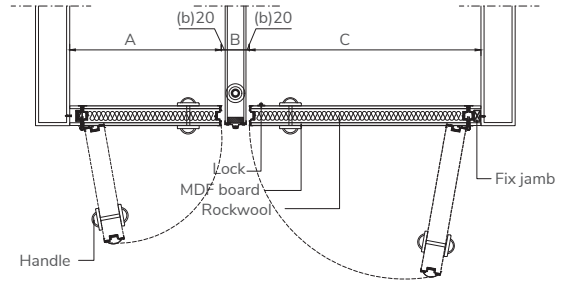
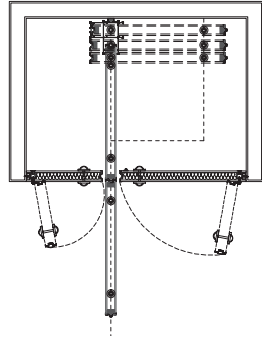
STACKING AREA OPTIONS



DETAIL

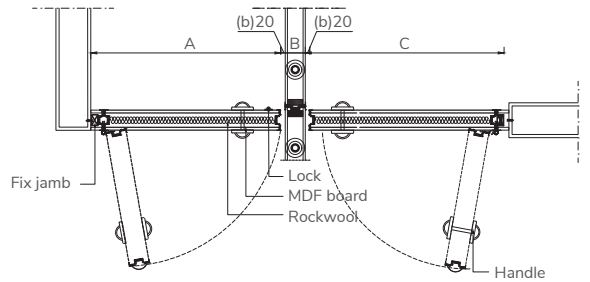
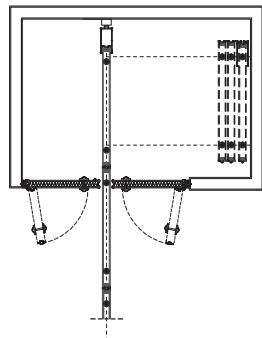


ORDINARY
STACKING



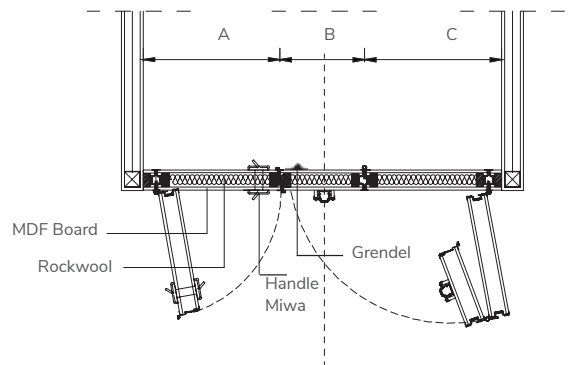
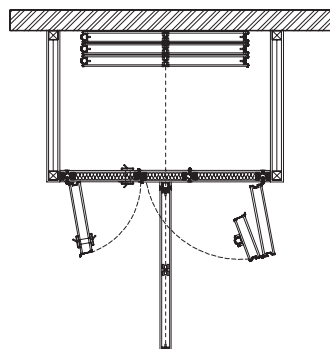
- $A \geq 300$
- $B = \text{Panel Thickness} + 40$
- $C \geq 300$

PARALLEL
STACKING



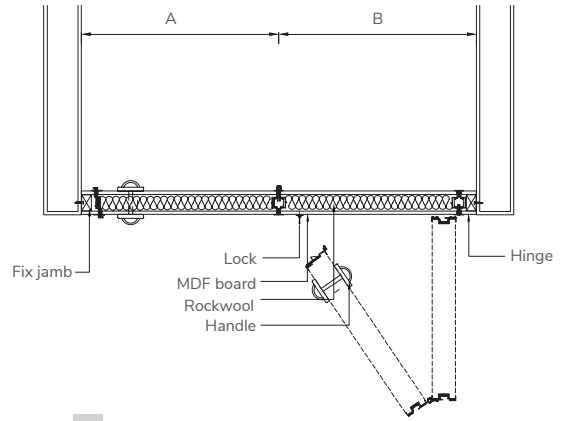
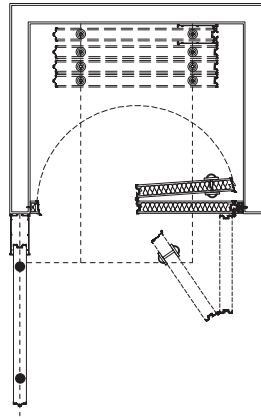
- $A \geq 300$
- $B = \text{Panel Thickness} + 40$
- $C \geq 300$

CENTER
STACKING



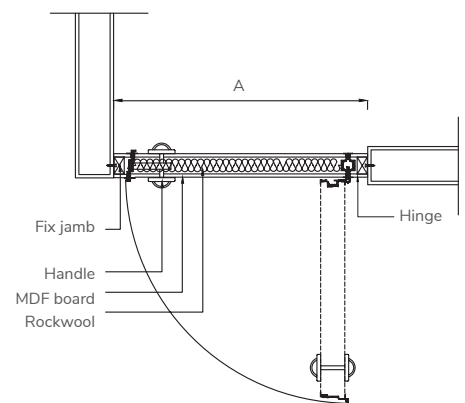
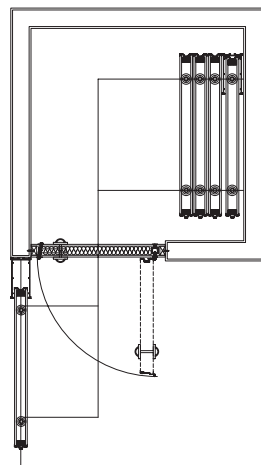
- $B = \text{Panel Thickness} + 40$
- $A \geq 300$
- $C \geq 300$

INDUCTION
STACKING A



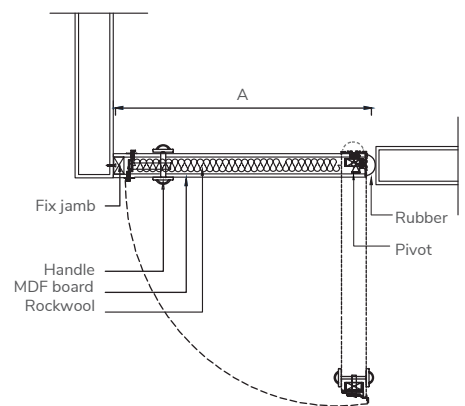
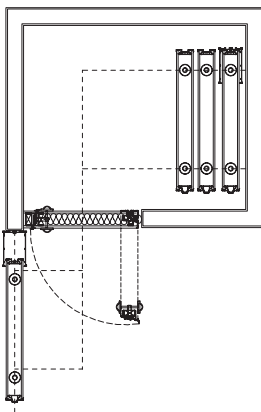
$A = B \geq 425$

INDUCTION
STACKING B
(HINGE STANDART)



$A \geq 800 \text{ max } 1200$

INDUCTION
STACKING B
(PIVOT HINGE)



$A \geq 800$



Rubber Contract Device

Shapped Aluminium Natural Anodized

Steel Plat 1.0mm

Contact Devise

Rockwool insulation density 80 kg/m³

Rubber Contract Device

Rubber

Hollow Steel Frame

MDF Board 12mm

Crank Handle

Rubber





www.sandei.co.id

📷 sandei_official



Visit Our Website